



# SIGGGI Beauty

for beauty and wellness

In un mondo frenetico, in cui ritmi a volte troppo rapidi scandiscono il nostro tempo, siamo alla ricerca di Equilibrio e Benessere.

Ritrova il battito del tuo cuore e ascolta.

Crea ambienti di pace.

Respira profumi che donano quiete.

Indossa abiti in sintonia con i tuoi movimenti e il tuo corpo.

Sigggi Beauty è eleganza, raffinatezza, armonia.



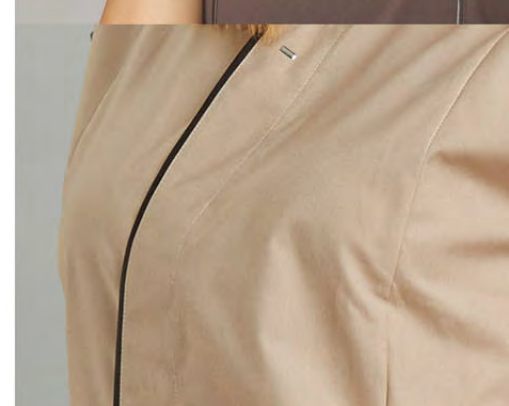
Professional clothing

In this hectic world, where our time passes at full speed, we're searching for wellness and balance. Find out your own heartbeat and listen to it.

Create peaceful environments.

Wear clothes in harmony with your motions and with your body.

Sigggi Beauty is elegance, smartness, harmony.



### PROFILO TECNICO TESSUTI

- **Popeline poliestere/cotone:** leggero e confortevole grazie alla mano morbida, lavorazione a doppia tintura tono su tono per ottenere la migliore omogeneità possibile del colore, aspetto cotoniero della fibra in poliestere grazie ad una attenta selezione della fibra stessa. Manutenzione agile, easy care-stiro facile
- **Piquet elasticizzato:** l'elegante lavorazione a nido d'ape rende questo tessuto particolarmente pregiato, la sua mano molto morbida, la ripresa elastica e l'ottima traspirabilità lo rendono confortevole e adatto a qualsiasi utilizzo. Manutenzione agile, easy care-stiro facile
- **Cotone e cotone/poliestere elasticizzati:** freschi, leggeri, dal massimo comfort e ottima vestibilità, particolarmente adatti per chi ha bisogno di sentire una completa libertà di movimento durante lo svolgimento della propria attività professionale.
- **Poliestere:** resistente e antimacchia particolarmente adatto a chi lavora con sostanze e liquidi colorati. Manutenzione agile, easy care-stiro facile

### FABRICS TECHNICAL SHEET

- **Popeline polyester/cotton:** light and comfortable thanks to its soft touch; double dyeing processing tone on tone, to get the best uniformity in color; cotton look for the polyester fiber thanks to an accurate selection of the fibers; easy maintenance, easy care, easy ironing.
- **Stretch piquet:** the smart honeycomb weave makes this fabric very fine and precious. Thanks to the soft touch, to the elastic answer of the fiber and to the perfect perspiration, this fabric is comfortable and suitable for any use. easy maintenance, easy care, easy ironing.
- **Stretch cotton and stretch cotton/polyester:** fresh and light fabrics, high comfortable and perfect fit; suitable for those who need to be free to move while working.
- **Polyester:** strong and stain resistant fabric, perfect for those working with colored substances and liquids. easy maintenance, easy care, easy ironing.

Abbigliamento professionale per il mondo della bellezza e del benessere



SIGGGI GROUP VESTE LA VOGLIA DI FARE

# Kimberly

**KIMBERLY  
CASACCA DONNA  
WOMAN TUNIC  
ART. 63CS1322**

Tessuto/Fabric:  
65% Poliestere/Polyester,  
35% Cotone/Cotton  
130 gr/m<sup>2</sup>  
Taglie/Sizes: XS / XXL

	8000 Nero	Black
	0001 Bianco	White
	4014 Blu	Blue



# Scarlett

**SCARLETT  
CASACCA DONNA  
WOMAN TUNICS  
ART. 63CS1320**

Tessuto/Fabric:  
65% Poliestere/Polyester,  
35% Cotone/Cotton  
130 gr/m<sup>2</sup>  
Taglie/Sizes: XS / XXL

	0001 Bianco	White
	7057 Beige	Beige
	7055 Marrone	Brown





# Payton

PAYTON  
CASACCA DONNA  
WOMAN TUNICS  
ART. 63CS1325

Tessuto/Fabric:  
65% Poliestere/Polyester,  
35% Cotone/Cotton Terital  
130 gr/m<sup>2</sup>  
Taglie/Sizes: XS / XXL

	0001	Bianco	White
	7057	Beige	Beige
	8000	Nero	Black



JACKY  
CAMICE DONNA  
WOMAN COAT  
ART. 63CA0492

# Jacky

Tessuto/Fabric:  
65% Poliestere/Polyester,  
35% Cotone/Cotton Terital  
130 gr/m<sup>2</sup>  
Taglie/Sizes: XS / XXL

	8000	Nero	Black
	0001	Bianco	White



**HADLEY**  
**CASACCA DONNA**  
**WOMAN TUNICS**  
**ART. 63CS1326**

Tessuto/Fabric:  
65% Poliestere/Polyester,  
35% Cotone/Cotton  
130 gr/m<sup>2</sup>  
Taglie/Sizes: XS / XXL

0001 Bianco White  
 8000 Nero Black

Hadley



**LOREN**  
**CASACCA DONNA**  
**WOMAN TUNICS**  
**ART. 63CS1327**

Tessuto/Fabric:  
65% Poliestere/Polyester,  
35% Cotone/Cotton  
130 gr/m<sup>2</sup>  
Taglie/Sizes: XS / XXL

0001 Bianco White  
 8000 Nero Black


Loren





**JESS**  
**CASACCA DONNA**  
**WOMAN TUNIC**  
**ART. 63CS1330**

Tessuto/Fabric:  
 65% Poliestere/Polyester  
 35% Cotone/Cotton  
 130 gr/m<sup>2</sup>  
 Taglie/Sizes: XS / XXL

	0001	Bianco	White
	8000	Nero	Black

Jess

**WOLLY**  
**CASACCA DONNA**  
**WOMAN TUNIC**  
**ART. 63CS1324**

Tessuto/Fabric:  
 65% Poliestere/Polyester  
 35% Cotone/Cotton  
 130 gr/m<sup>2</sup>  
 Taglie/Sizes: XS / XXL

	0001	Bianco	White
	8000	Nero	Black

Wolly



MAGGIE  
CASACCA DONNA  
WOMAN TUNIC  
ART. 63CS1334

Tessuto/Fabric:  
65% Poliestere/Polyester,  
35% Cotone/Cotton  
130 gr/m<sup>2</sup>  
Taglie/Sizes: XS / XXL

- 0001 Bianco White
- 8000 Nero Black

Maggie

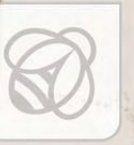


CASSANDRA  
CASACCA DONNA  
WOMAN TUNIC  
ART. 63CS1333

Tessuto/Fabric:  
65% Poliestere/Polyester,  
35% Cotone/Cotton  
130 gr/m<sup>2</sup>  
Taglie/Sizes: XS / XXL

- 0001 Bianco White
- 8000 Nero Black

Cassandra



# Kelly

**KELLY**  
**CASACCA DONNA**  
**WOMAN TUNIC**  
**ART. 63CS1329**

Tessuto/Fabric:  
65% Poliestere/Polyester,  
35% Cotone/Cotton  
130 gr/m<sup>2</sup>  
Taglie/Sizes: XS / XXL

	8000	Nero	Black
	4014	Blu	Blue
	3046	Lilla	Lilac



**KARINNE**  
**CASACCA DONNA**  
**WOMAN TUNIC**  
**ART. 63CS1328**

Tessuto/Fabric:  
65% Poliestere/Polyester,  
35% Cotone/Cotton  
130 gr/m<sup>2</sup>  
Taglie/Sizes: XS / XXL

	0001	Bianco	White
	7055	Marrone	Brown

# Karinne



# Michiko

MICHIKO  
**CASACCA DONNA**  
**WOMAN TUNICS**  
**ART. 63CS1332**

Tessuto/Fabric:  
65% Poliestere/Polyester,  
35% Cotone/Cotton  
130 gr/m<sup>2</sup>

Taglie/Sizes: XS / XXL

	0001	Bianco	White
	8000	Nero	Black

JAIDEN  
**SCAMICIATO DONNA**  
**WOMAN PINAFORE**  
**ART. 63SC0090**

Tessuto/Fabric:  
100% Poliestere/Polyester,  
180 gr/m<sup>2</sup>

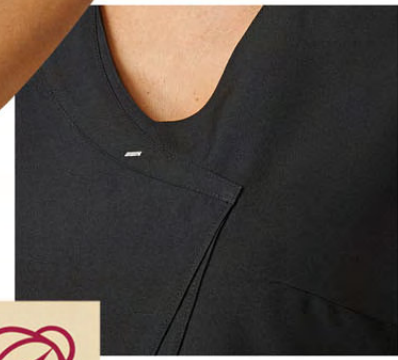
Taglie/Sizes: XS / XXL

	0001	Bianco	White
	8000	Nero	Black
	3010	Fucsia	Fuchsia

# Jaiden







Woopy

WOOPY  
SCAMICIATO DONNA  
WOMAN PINAFORE  
ART. 63SC0086

Tessuto/Fabric:  
100% Poliestere/Polyester,  
180 gr/m<sup>2</sup>  
Taglie/Sizes: I° - II° Misura/Measure

- 8000 Nero Black
- 3010 Fucsia Fuchsia
- 7034 Marrone Brown



MALIKA  
PARANNANZA DONNA  
WOMAN APRON  
ART. 63PZ0339

Tessuto/Fabric:  
100% Poliestere/Polyester  
180 gr/m<sup>2</sup>  
Taglie/Sizes: UNICA / ONE SIZE

- 8000 Nero Black
- 7034 Marrone Brown

Malika

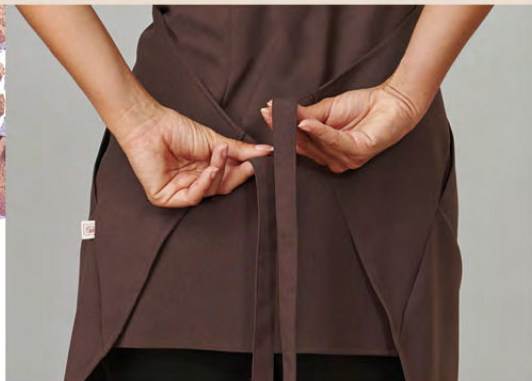


Professional clothing for beauty and wellness



CONNY  
ART. 60PZ0301  
**Conny**

**Trisha**  
TRISHA  
ART. 63SC0089



MARYLINE  
SCAMICIATO DONNA  
WOMAN PINAFORE  
ART. 63SC0087

Tessuto/Fabric:  
100% Poliestere/Polyester,  
180 gr/m<sup>2</sup>  
Taglie/Sizes: UNICA / ONE SIZE

8000 Nero Black  
7034 Marrone Brown

**Maryline**



CONNY  
ART. 60PZ0301  
Tessuto/Fabric:  
75% Poliestere/Polyester,  
25% Poliuretano/Polyurethane, 130 gr/m<sup>2</sup>  
Taglie/Sizes: UNICA / ONE SIZE

8000 Nero Black

TRISHA  
ART. 63SC0089  
Tessuto/Fabric:  
100% Poliestere/Polyester,  
180 gr/m<sup>2</sup>  
Taglie/Sizes: UNICA / ONE SIZE

8000 Nero Black



STEFANY  
PANTALONE DONNA  
WOMAN TROUSERS  
ART. 63PA0983

Stefany

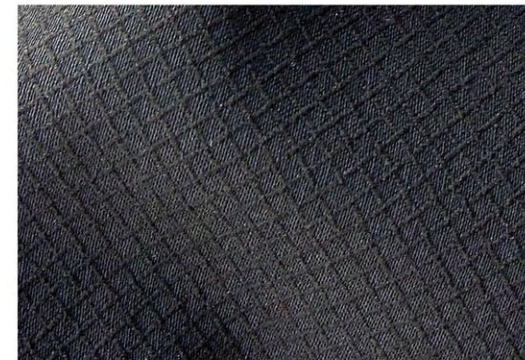
Tessuto/Fabric:  
70% Cotone/Cotton  
25% Poliammide/Polyamide  
5% Elastan  
115 gr/m<sup>2</sup>  
Taglie/Sizes: XS / XXL

8000 Nero Black



Piquet elasticizzato, elegante lavorazione a nido d'ape, ottima traspirabilità, confortevole, stiro facile.

Stretch piquet, the smart honeycomb weave makes this fabric very fine and precious, perfect perspiration, perfect comfort, easy ironing.



Happy

HAPPY  
PANTALONE DONNA  
WOMAN TROUSERS  
ART. 63PA0995

Tessuto/Fabric:  
65% Poliestere/Polyester,  
35% Cotone/Cotton  
130 gr/m<sup>2</sup>  
Taglie/Sizes: XS / XXL

0001 Bianco White  
8000 Nero Black



OWEN  
CASACCA UOMO  
MAN TUNICS  
ART. 63CS1331/00-0761

Tessuto/Fabric:  
96% Cotone/Cotton,  
4% Elastan  
130 gr/m<sup>2</sup>  
Taglie/Sizes: XS / XXL

8000 Nero Black

Owen



Jeremy

GEREMY  
PANTALONE UOMO  
MAN TROUSERS  
ART. 63PA0986/00-0757

Tessuto/Fabric:  
55% Cotone/Cotton,  
42% Poliestere/Polyester  
3% Spandex  
160 gr/m<sup>2</sup>  
Taglie/Sizes: XS / XXL

0001 Bianco White

PANTALONE UOMO  
MAN TROUSERS  
ART. 63PA0986/00-0761

Tessuto/Fabric:  
96% Cotone/Cotton,  
4% Elastan  
130 gr/m<sup>2</sup>  
Taglie/Sizes: XS / XXL

8000 Nero Black



Tessuto stretch  
massimo comfort!  
Stretch fabric for your best  
comfort!

OWEN  
CASACCA UOMO  
MAN TUNICS  
ART. 63CS1331/00-0757

Tessuto/Fabric:  
42% Poliestere/Polyester,  
55% Cotone/Cotton, 3% Spandex  
160 gr/m<sup>2</sup>  
Taglie/Sizes: XS / XXL

0001 Bianco White

Owen

SIGGI  
Beauty



**ARMONY**  
KIMONO DONNA CORTO  
WOMAN SHORT TUNIC  
ART. 60CS1074



**NEW AGE**  
KIMONO DONNA LUNGO  
WOMAN LONG TUNIC  
ART. 60CS1075



**NEW AGE**  
KIMONO DONNA LUNGO  
WOMAN LONG TUNIC  
ART. 60CS1075

Tessuto/Fabric:  
65% Poliestere/Polyester,  
35% Cotone/Cotton Terital  
125 gr/m<sup>2</sup>  
Taglie/Sizes: UNICA / ONE SIZE

	0001	Bianco	White
	8000	Nero	Black



**JINNY**  
CIABATTINA INFRADITO / FLIP-FLOP  
60CU0032

Ciabattina infradito per le ospiti del salone.  
Si presenta ripiegata in confezione salva spazio,  
facilmente componibile per l'utilizzo.  
Slipper flip-flops for the guests of the beauty  
salon. It shows folded in space-saving package,  
modular easy to use.

100% EVA materiale atossico e degradabile  
100% EVA non-toxic and degradable  
Taglie/Sizes: UNICA/ONE SIZES  
Colore/Colour: Bianco/White 0001   
Lilla/Lilac 3032

**MERION**  
MANTELLA/MANTLE  
ART. 60MN0015



**MERION**  
MANTELLA/MANTLE  
ART. 60MN0015

Tessuto/Fabric:  
100% Poliestere+Teflon  
100% Polyester+Teflon,  
70 gr/m<sup>2</sup>  
Taglie/Sizes: UNICA / ONE SIZES

	8000	Nero	Black
	3041	Fucsia	Fuchsia
	8038	Grigio	Grey



**ARMONY**  
KIMONO DONNA CORTO  
WOMAN SHORT TUNIC  
ART. 60CS1074

Tessuto/Fabric:  
65% Poliestere/Polyester,  
35% Cotone/Cotton Terital  
125 gr/m<sup>2</sup>  
Taglie/Sizes: UNICA / ONE SIZE

	0001	Bianco	White
	8000	Nero	Black

Armony

Merion

New Age